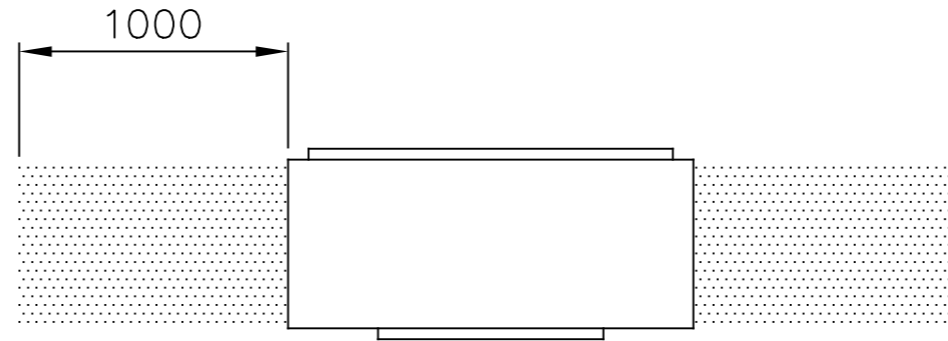


PLAN VIEW

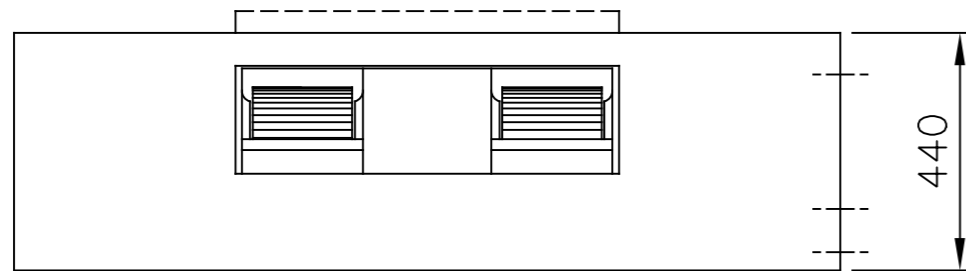


CLEARANCE DETAIL
NTS

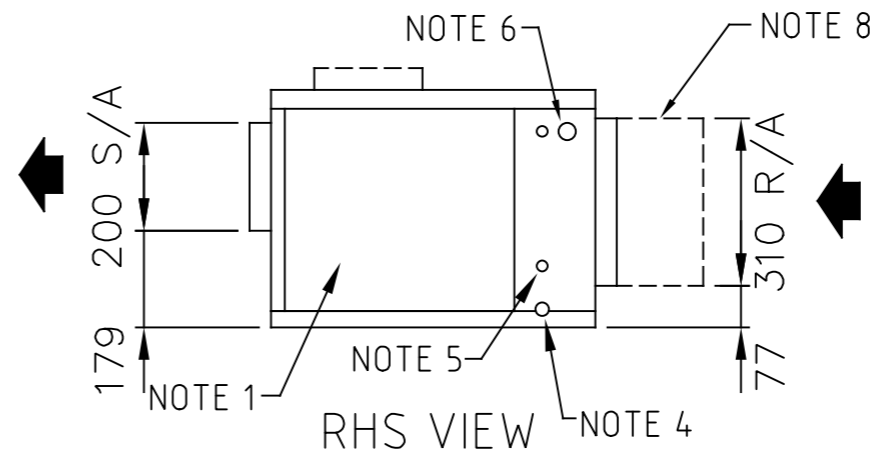
POINT LOADS (kg)			
A	B	C	D
26.25	26.25	26.25	26.25

NOTE:

1. CABINET SERVICE ACCESS
2. AV MOUNTING LOCATIONS
3. RECOMMENDED LIFTING POINTS (SPREADER BARS REQUIRED)
4. CONDENSATE DRAIN (1 x ϕ 20 mm PVC)
5. ELECTRICAL ENTRY (1 x ϕ 20 mm)
6. REFRIGERATION PIPING SUCTION 7/8", LIQUID 1/2"
7. DUCTING OPTIONS - TOP S/A
8. OPTIONAL AIR FILTER (50 mm PLEATED & WASHABLE)



FRONT VIEW



RHS VIEW

REV	DATE	DETAILS
1	24.05.2012	MODEL TITLE UPDATE
2	20.06.2013	TOP S/A ADDED
3	29.07.2013	NOTES & DIMS REVISED
4	26.05.2022	VIEW LABELS UPDATED
5	20.06.2022	POINT LOADS ADDED
6	5.07.2022	AIR FILTER ADDED

DRAWING No.

CAG012000

REVISION	6
DATE	5.07.2022



ACN 140 272 171
68 COCOS DRIVE
BIBRA LAKE WA 6163
(08) 9244 9288

CUT SIZE	-----	SCALE	1:20
MATERIAL	-----	DRAWN	EW
QUANTITY	-----	APPROVED	MD

HIA012R1AB, HIA012C1AB, HIA015R1AB, HIA015C1AB,
HIA017R1AB, HIA017C1AB

- ALL DIMENSIONS IN mm.
- GENERAL TOLERANCE \pm 1mm.
- DO NOT SCALE DRAWING.
- MASTER DRAWINGS ARE HELD ELECTRONICALLY. ANY COPY IS DEEMED UNCONTROLLED AND THEREFORE NOT NECESSARILY THE LATEST REVISION.
- ALL INFORMATION REMAINS THE PROPERTY OF THE COMPANY.

GENERAL ARRANGEMENT