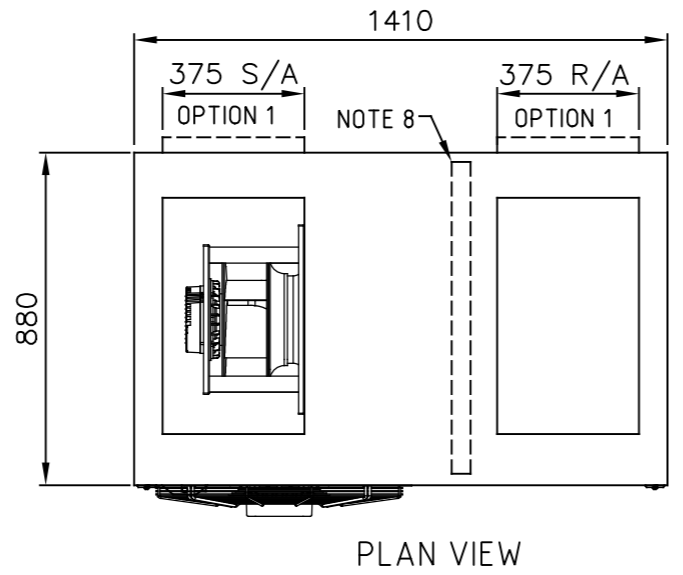
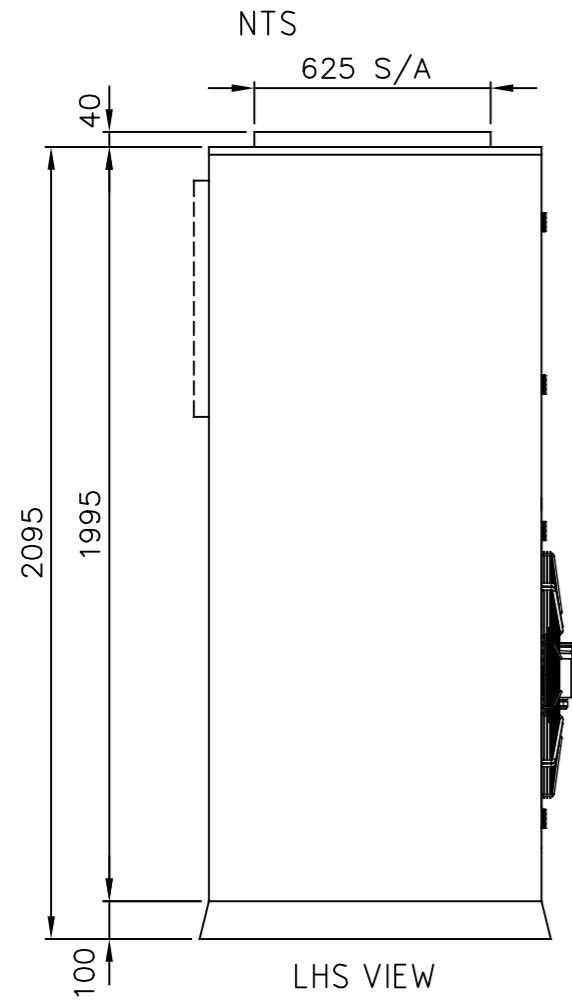


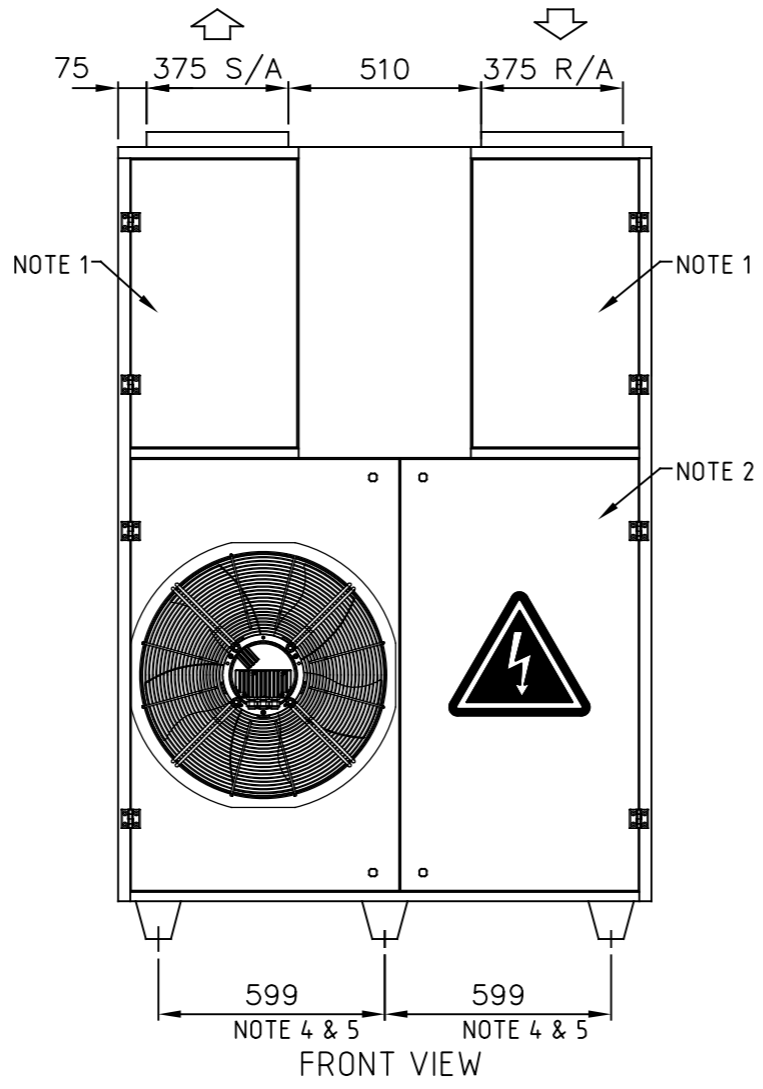
CLEARANCE DETAIL
NTS



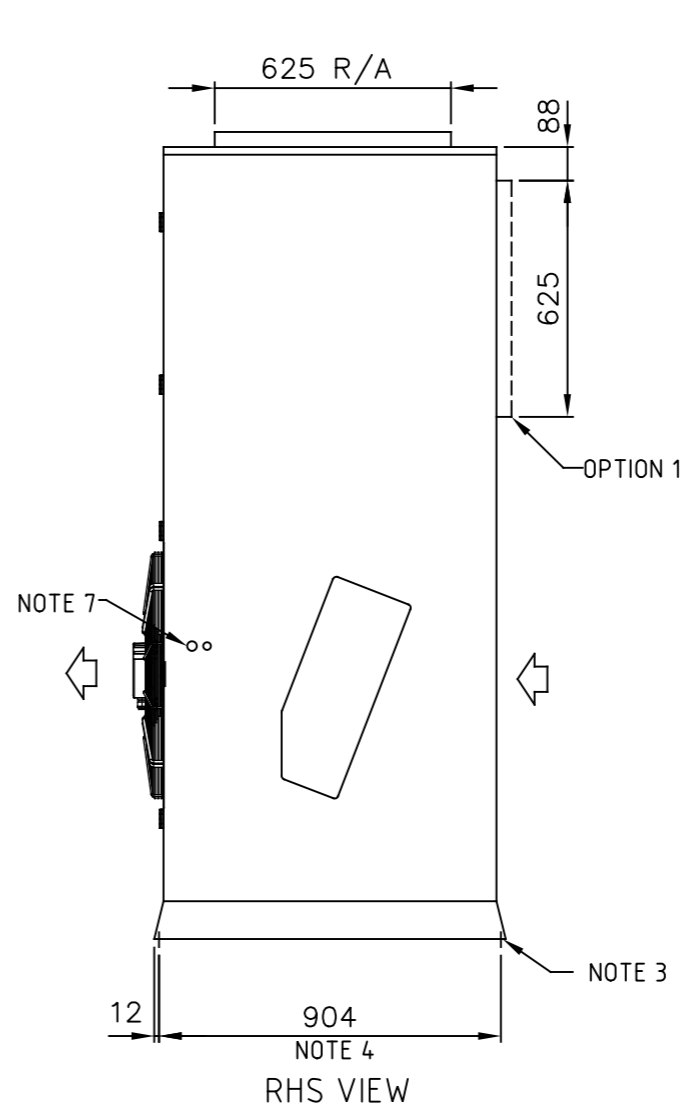
PLAN VIEW



LHS VIEW



FRONT VIEW



RHS VIEW

- NOTES:
- EVAPORATOR CABINET SERVICE ACCESS
 - CONDENSER CABINET SERVICE ACCESS
 - TRANSPORTATION FEET
 - AV MOUNTING LOCATIONS
 - RECOMMENDED LIFTING POINTS (SPREADER BARS MUST BE USED)
 - Ø20mm PVC DRAIN
 - ELECTRICAL ENTRY (1 x Ø20mm, 1 x Ø25mm)
 - AIR FILTER (50mm PLEATED, WASHABLE)
 - DUCTING OPTIONS:
OPTION 1- REAR S/A & R/A
OPPOSITE HANDINGS FOR ALL OPTIONS
- Unit weight:- 400 Kg

REV	DATE	DETAILS
1	24.09.2020	REAR S/A & R/A ADDED
2	25.05.2022	VIEW LABELS UPDATED

DRAWING No.

CAG020016

REVISION	2
DATE	25.05.2022
SCALE	1 : 35
DRAWN	EW
APPROVED	MD

ACN 140 272 171
68 COCOS DRIVE
BIBRA LAKE WA 6163
(08) 9244 9288

VPA020R3AC, VPA020C3AC, VPA022R3AC, VPA022C3AC
VPV020R3AC, VPV020C3AC, VPV022R3AC, VPV022C3AC

- ALL DIMENSIONS IN mm.
- GENERAL TOLERANCE ±1mm.
- DO NOT SCALE DRAWING.
- MASTER DRAWINGS ARE HELD ELECTRONICALLY. ANY COPY IS DEEMED UNCONTROLLED AND THEREFORE NOT NECESSARILY THE LATEST REVISION.
- ALL INFORMATION REMAINS THE PROPERTY OF THE COMPANY.

GENERAL ARRANGEMENT