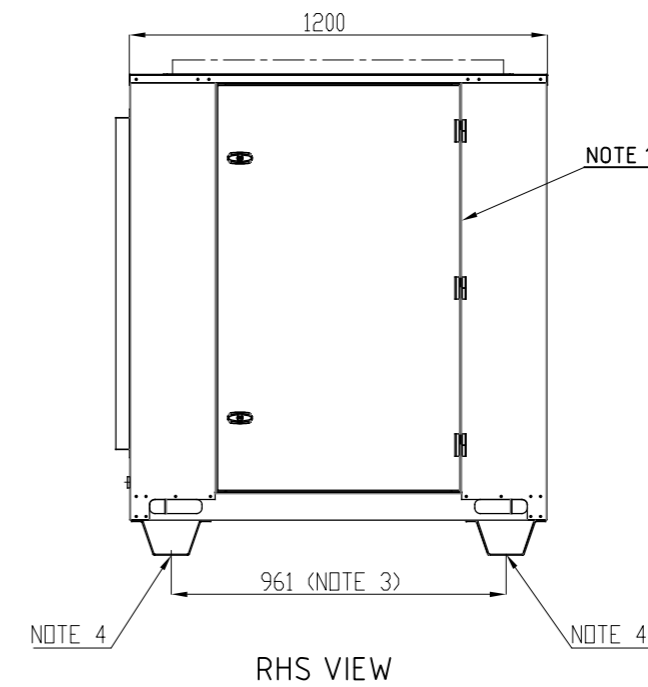
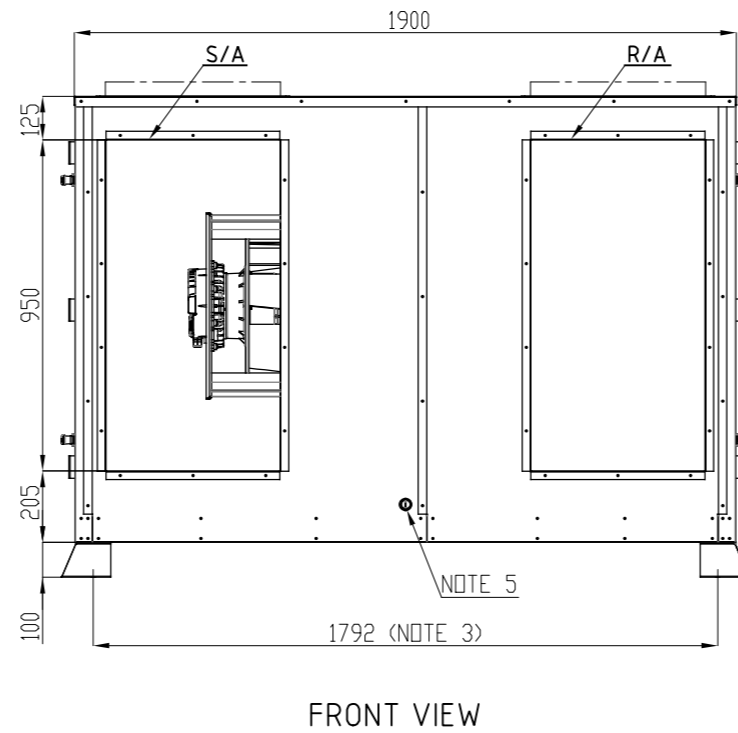
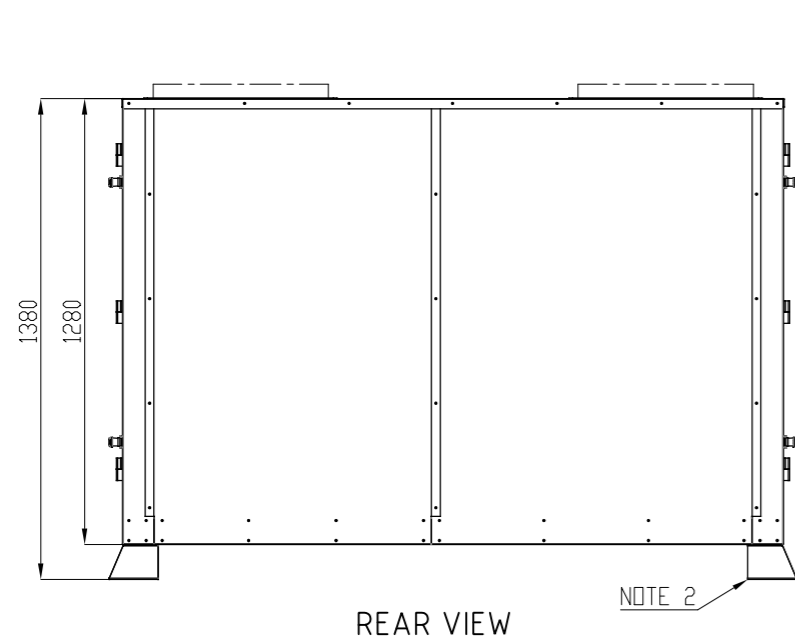
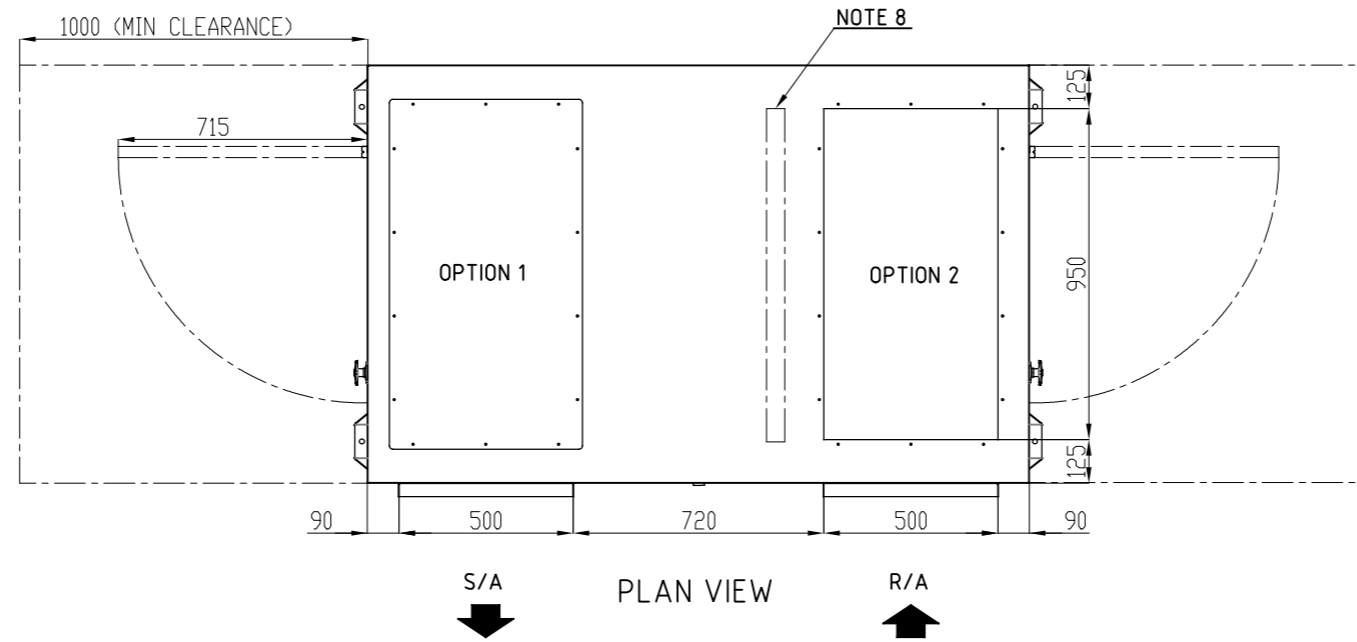


REV No	DATE	REV. BY	DETAILS
0	23/03/20	SP	PRELIMINARY DRAWING
1	17/06/21	EW	ISSUED FOR MANUFACTURE

- NOTE:**
- CABINET SERVICE ACCESS
 - TRANSPORTATION FEET (REMOVAL IS OPTIONAL)
 - AV MOUNTING LOCATIONS
 - RECOMMENDED LIFTING POINTS SPREADER BARS MUST BE USED
 - CONDENSATE DRAIN (1 x ϕ 20mm PVC)
 - ELECTRICAL ENTRY TBA (2 x ϕ 20mm)
 - REFRIGERATION PIPING (SEE THE TABLE BELOW)
 - OPTIONAL AIR FILTER (50MM PLEATED, WASHABLE)
 - DUCTING OPTIONS:
 OPTION 1 - TOP S/A
 OPTION 2 - TOP R/A
 OPPOSITE HANDINGS FOR ALL OPTIONS

Unit weight: 350 kg

MODEL	SUCTION	LIQUID	REHEAT (OPTIONAL)
HIA025-045R3AD	2 X 7/8"	2 X 1/2"	2 X 1/2"
HIA025-045C3AD	2 X 7/8"	2 X 1/2"	2 X 1/2"



DRAWING No.

CAG035010

REVISION	REV-1
DATE	17.06.2021
SCALE	1:7
DRAWN	EW
APPROVED	MD

ACN 140 272 171
 68 COCOS DRIVE
 BIBRALAKE WA6163
 (08)92449288

HIA025R3AD, HIA025C3AD, HIA030R3AD, HIA030C3AD
 HIA035R3AD, HIA035C3AD

GENERAL ARRANGEMENT

- ALL DIMENSIONS IN mm.
- GENERAL TOLERANCE \pm 1mm.
- DO NOT SCALE DRAWING.
- MASTER DRAWINGS ARE HELD ELECTRONICALLY. ANY COPY IS DEEMED UNCONTROLLED AND THEREFORE NOT NECESSARILY THE LATEST REVISION.
- ALL INFORMATION REMAINS THE PROPERTY OF THE COMPANY.