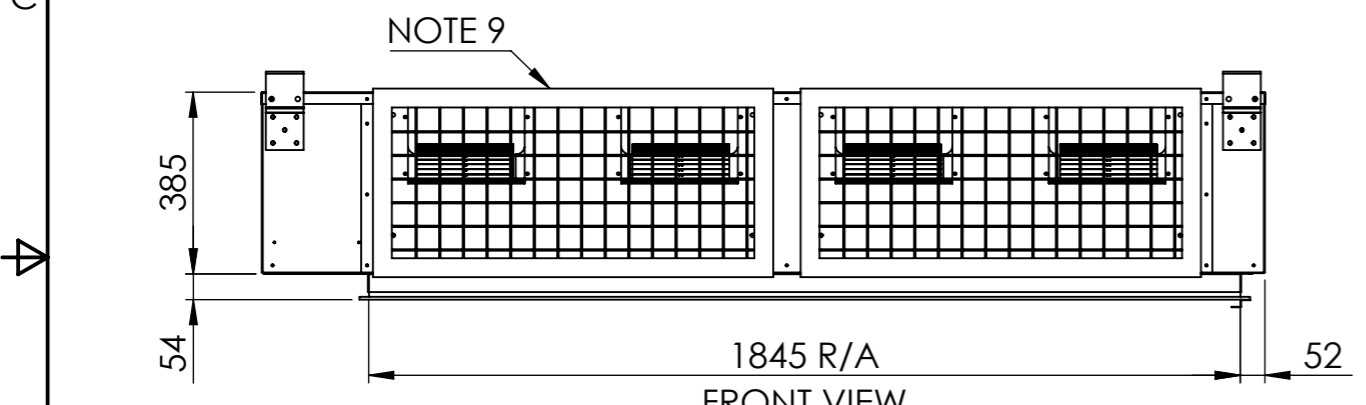
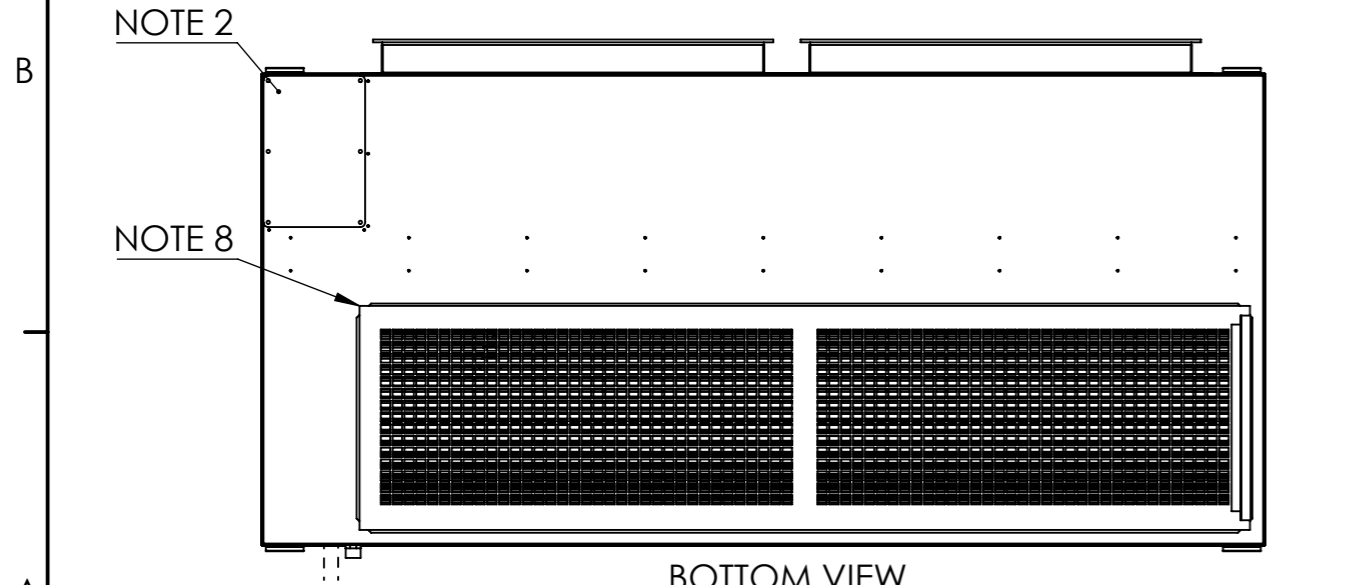


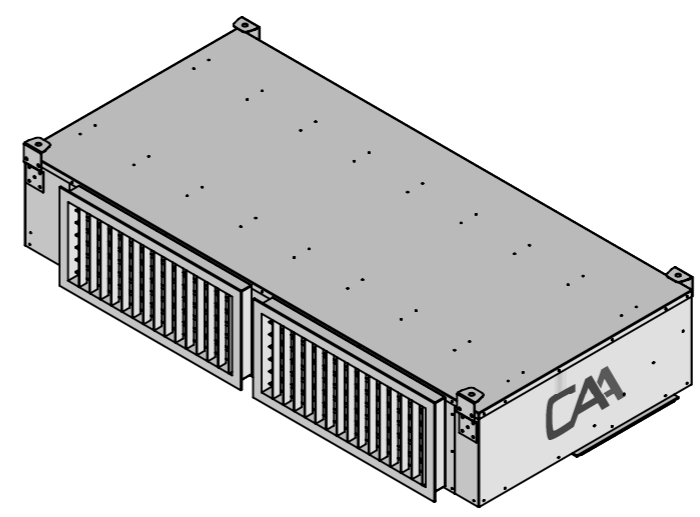
PLAN VIEW



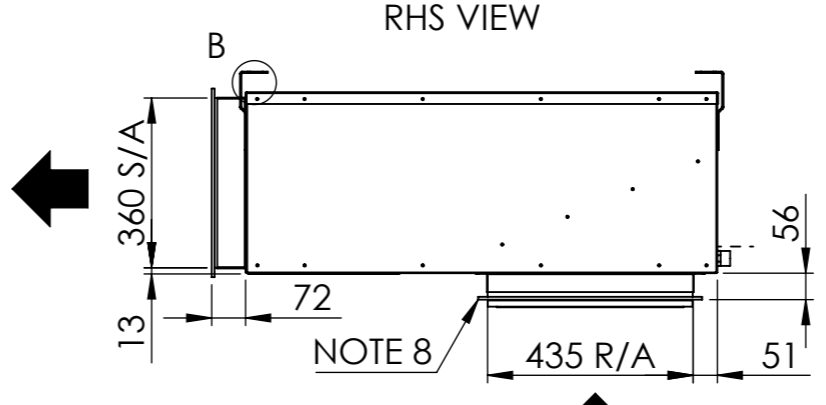
FRONT VIEW



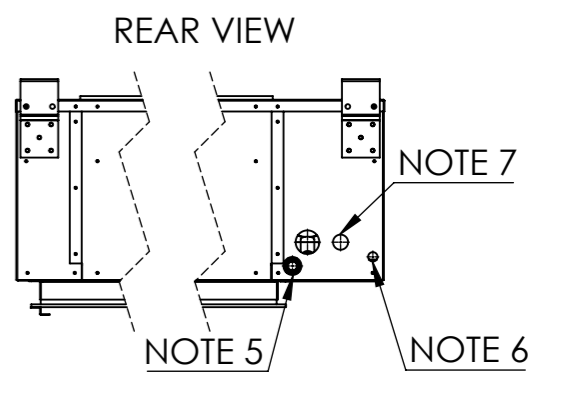
BOTTOM VIEW



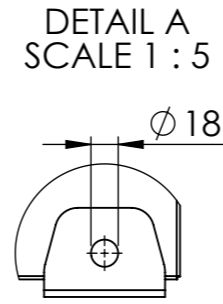
- NOTE:**
1. EVAPORATOR CABINET SERVICE ACCESS (REMOVE GRILLE & FAN ASSEMBLY TO ACCESS)
 2. ELECTRICAL SWITCH BOARD ACCESS
 3. MOUNTING CENTRES
 4. RECOMMENDED LIFTING POINTS (SPREADER BARS REQUIRED)
 5. EVAPORATOR COIL CONDENSATE DRAIN (Ø20 mm PVC)
 6. ELECTRICAL ENTRY: 1 x Ø20 mm HOLE
 7. REFRIGERATION PIPING: SUCTION 1 x 1-1/8" LIQUID 1 x 5/8"
 8. R/A HINGED EGGRATE GRILLE WITH 12 mm REMOVABLE FILTER
 9. S/A GRILLE WITH MANUAL DOUBLE DEFLECTION ADJUSTMENT



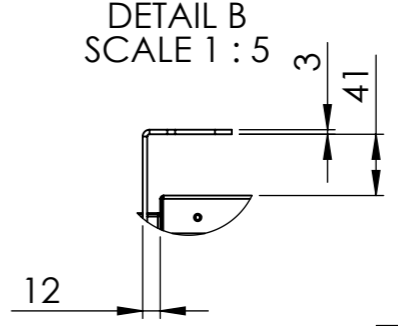
RHS VIEW



REAR VIEW



DETAIL A SCALE 1 : 5



DETAIL B SCALE 1 : 5

REVISIONS			
REV.	REV BY	DATE	DETAILS
0	SP	1/02/2021	ISSUED FOR MANUFACTURE
1	EW	26/05/2022	LABEL VIEWS UPDATED
2	EW	7/10/2022	REFRIGERATION PIPING ADDED
3	EW	17/01/2023	LENGTH EXTENDED & ELECTRICAL BOX MERGED INTO UNIT

DWG NO. CAC040004		REVISION 3	DO NOT SCALE DRAWING	<p>COMM AIR AUSTRALIA AIR CONDITIONING MANUFACTURERS</p> <p>ACN 140 272 171 68 COCOS DRIVE BIBRA LAKE WA 6163 (08) 9244 9288</p>
DATE 3/07/2023		ORIGINAL SIZE: A3		
CUT SIZE	-	WEIGHT 150 kg	SCALE 1:16	
MATERIAL	-	SURFACE FINISH POWDER COATED	DRAWN BY EW	SHEET 1 OF 1
QUANTITY 1			APPROVED BY MD	

MODEL: HIA040C2AA, HIA040R2AA	<ul style="list-style-type: none"> • ALL DIMENSIONS IN mm • GENERAL TOLERANCE ± 1 mm • DO NOT SCALE DRAWING • MASTER DRAWINGS ARE HELD ELECTRONICALLY. ANY COPY IS DEEMED UNCONTROLLED AND THEREFORE NOT NECESSARILY THE LATEST REVISION • ALL INFORMATION REMAINS THE PROPERTY OF COMM AIR AUSTRALIA PTY LTD
DESCRIPTION: GENERAL ARRANGEMENT	