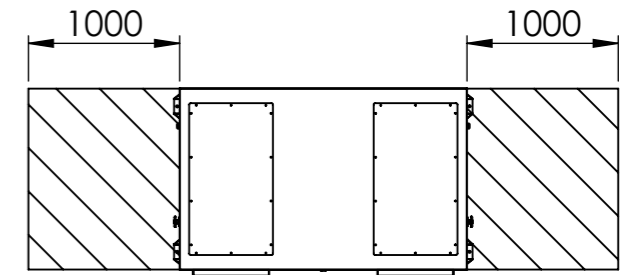
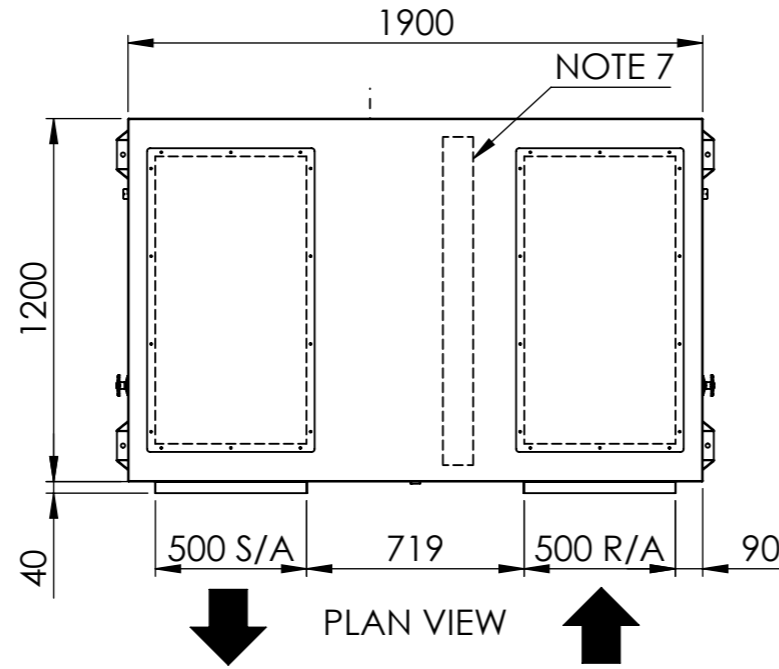
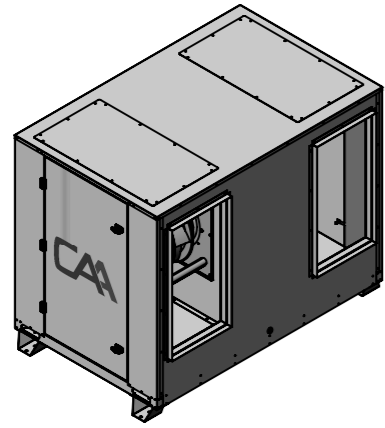


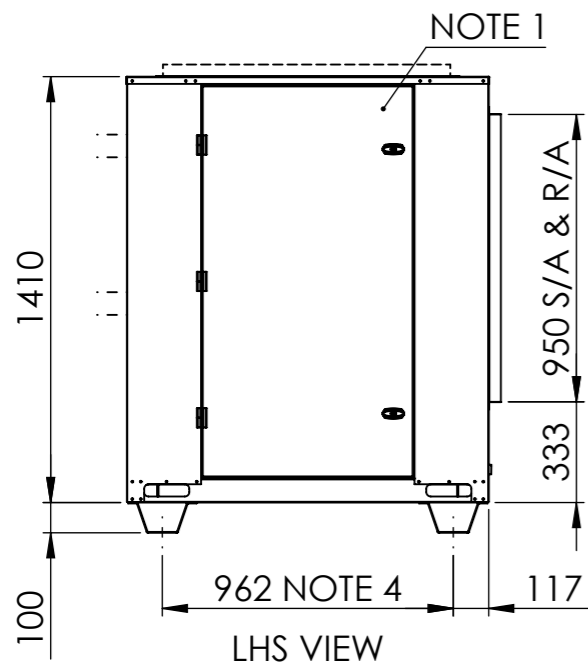
REVISIONS			
REV.	REV BY	DATE	DETAILS
0	EW	18/01/2022	ISSUED FOR MANUFACTURE

- NOTE:**
- EVAPORATOR CABINET SERVICE ACCESS
 - ELECTRICAL JUNCTION BOX
 - TRANSPORTATION FEET (REMOVAL IS OPTIONAL)
 - AV MOUNTING LOCATIONS (Ø12 mm)
 - RECOMMENDED LIFTING POINTS (SPREADER BARS REQUIRED)
 - EVAPORATOR CONDENSATE DRAIN (Ø20 mm PVC)
 - OPTIONAL AIR FILTER (50 mm PLEATED & WASHABLE)
 - REFRIGERATION PIPING:
SUCTION = 2 x 7/8"
LIQUID = 2 x 1/2"
OPTIONAL REHEAT = 2 x 1/2"
 - DUCTING OPTIONS:
 - OPTION 1 - TOP S/A
 - OPTION 2 - TOP R/A

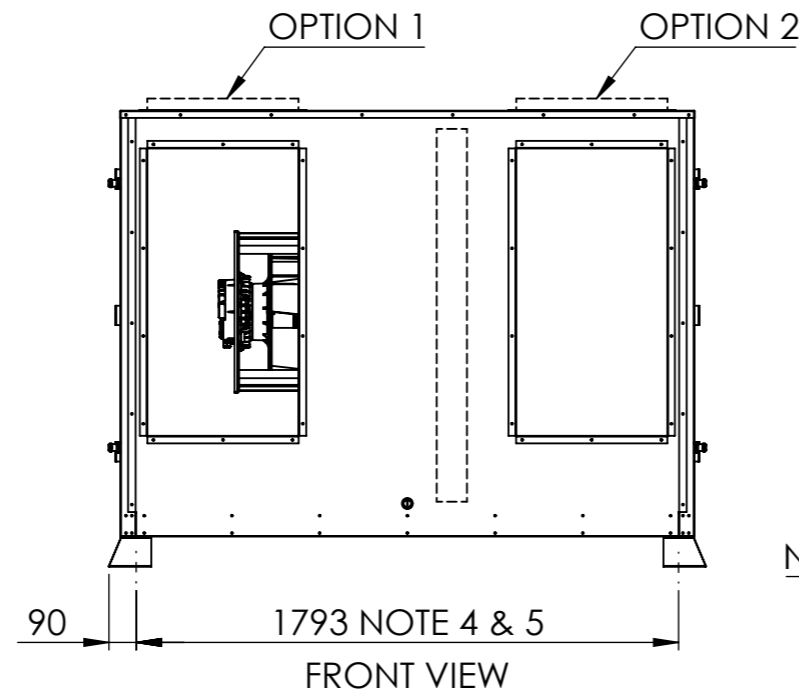
OPPOSITE HANDINGS FOR ALL OPTIONS



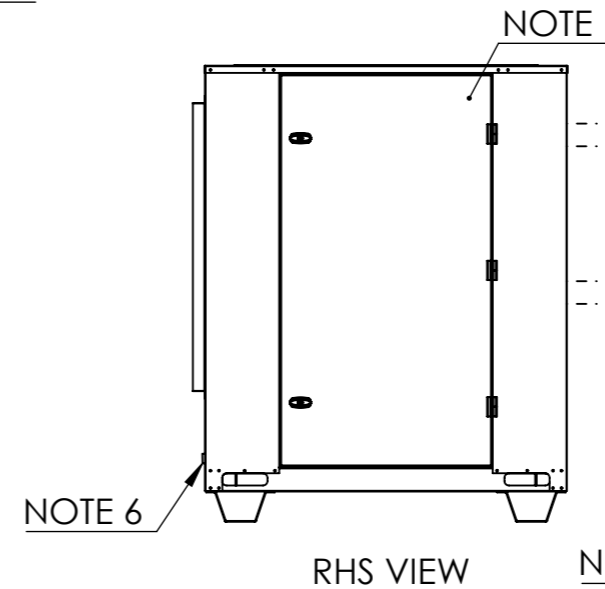
CLEARANCE DETAIL NTS



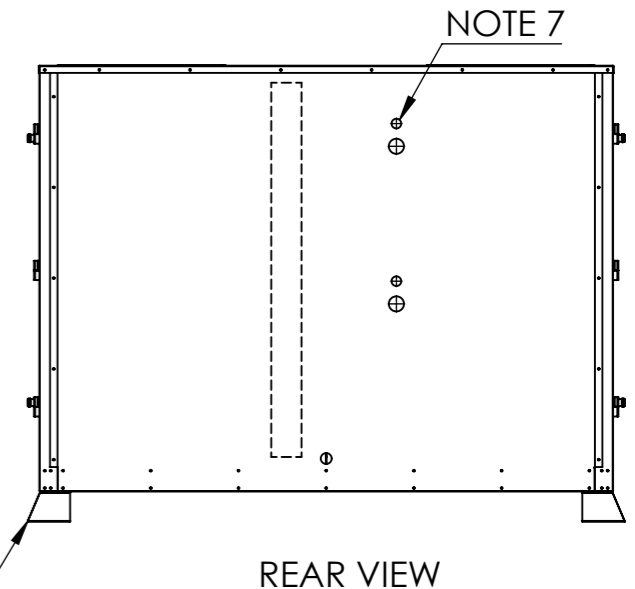
LHS VIEW



FRONT VIEW



RHS VIEW



REAR VIEW

DWG NO. CAG045041				REVISION	0	DO NOT SCALE DRAWING
				DATE	18/01/2023	ORIGINAL SIZE: A3
CUT SIZE	-	WEIGHT	-	SCALE	1:25	A3
MATERIAL	-	SURFACE FINISH	POWDER COATED	DRAWN BY	EW	SHEET 1 OF 1
QUANTITY	1			APPROVED BY	MD	

CAA
COMM AIR AUSTRALIA
AIR CONDITIONING MANUFACTURERS

ACN 140 272 171
68 COCOS DRIVE
BIBRA LAKE WA 6163
(08) 9244 9288

MODEL:	HIA038C3AD, HIA038R3AD HIA045C3AD, HIA045R3AD
DESCRIPTION:	GENERAL ARRANGEMENT

- ALL DIMENSIONS IN mm
- GENERAL TOLERANCE ± 1 mm
- DO NOT SCALE DRAWING
- MASTER DRAWINGS ARE HELD ELECTRONICALLY. ANY COPY IS DEEMED UNCONTROLLED AND THEREFORE NOT NECESSARILY THE LATEST REVISION
- ALL INFORMATION REMAINS THE PROPERTY OF COMM AIR AUSTRALIA PTY LTD