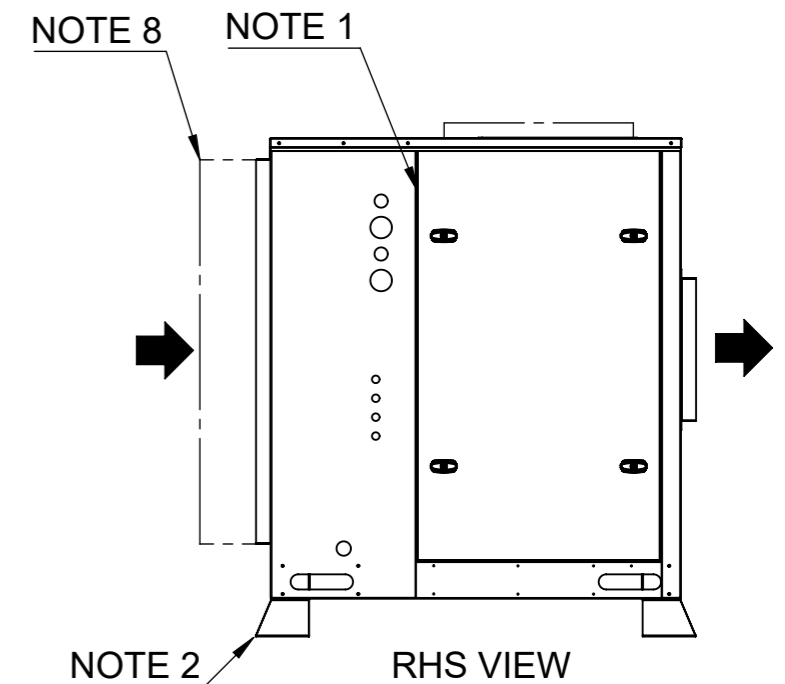
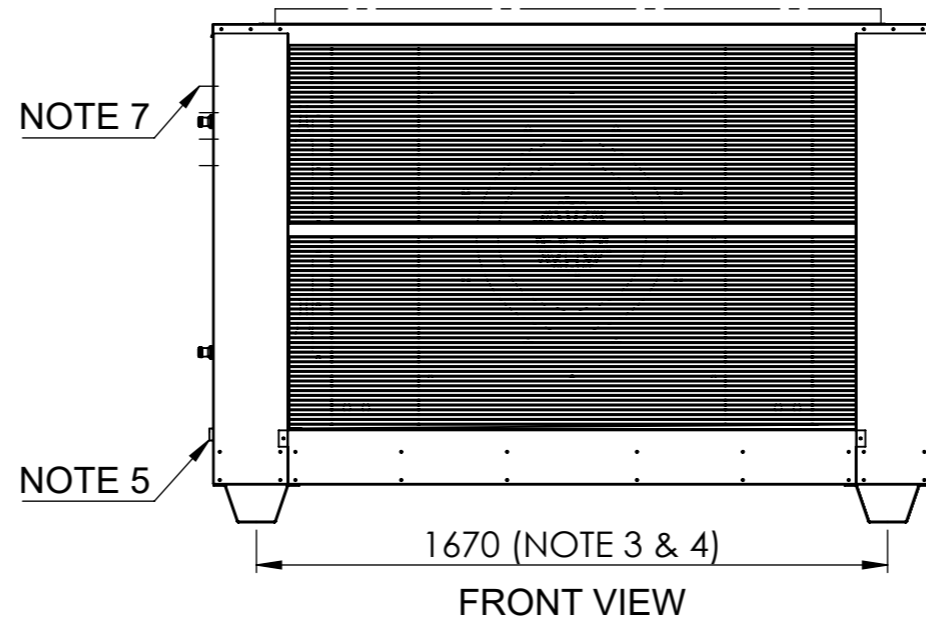
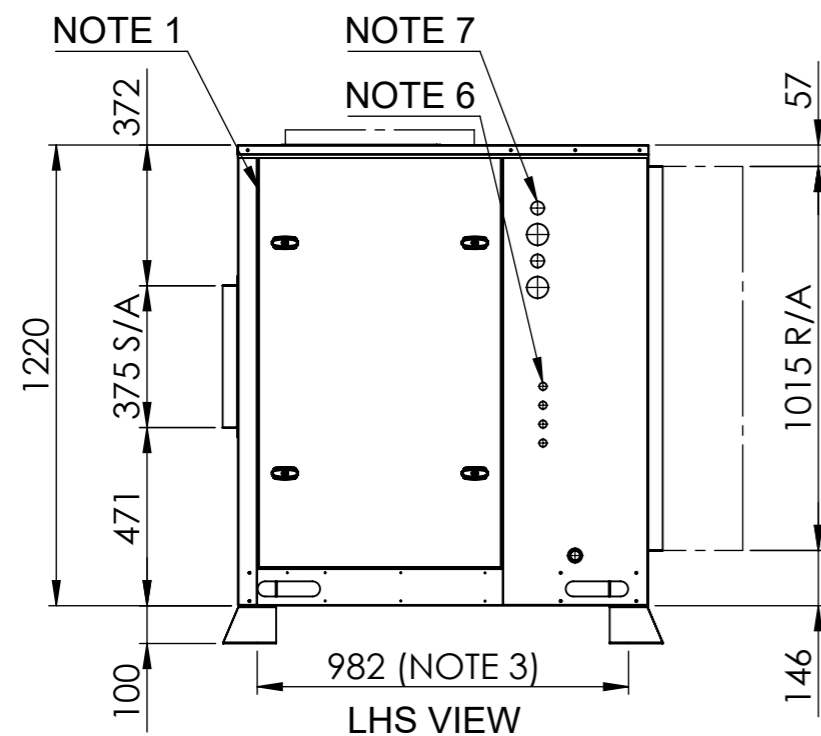


- NOTE:**
1. EVAPORATOR CABINET SERVICE ACCESS
  2. TRANSPORTATION FEET (REMOVAL IS OPTIONAL)
  3. AV MOUNTING LOCATIONS (Ø12 mm)
  4. RECOMMENDED LIFTING POINTS (SPREADER BARS REQUIRED)
  5. EVAPORATOR COIL CONDENSATE DRAIN (Ø20 mm PVC)
  6. ELECTRICAL ENTRY (Ø20 mm)
  7. REFRIGERATION PIPING SUCTION = 2 x 1-1/8", LIQUID = 2 x 5/8"
  8. OPTIONAL AIR FILTER (50 mm PLEATED & WASHABLE)
  9. DUCTING OPTIONS:  
OPTION 1 - TOP S/A



REVISIONS			
REV.	REV BY	DATE	DETAILS
0	EW	23/09/2021	PRELIMINARY DRAWING
1	EW	18/02/2022	3D MODEL ADDED

DWG NO. <b>CAG055010</b>				REVISION	1	DO NOT SCALE DRAWING	<p>COMM AIR AUSTRALIA AIR CONDITIONING MANUFACTURERS ACN 140 272 171 68 COCOS DRIVE BIBRA LAKE WA 6163 (08) 9244 9288</p>	MODEL:	HIA055C3AD, HIA055R3AD HIA065C3AD, HIA065R3AD	<ul style="list-style-type: none"> <li>• ALL DIMENSIONS IN mm</li> <li>• GENERAL TOLERANCE ± 1 mm</li> <li>• DO NOT SCALE DRAWING</li> <li>• MASTER DRAWINGS ARE HELD ELECTRONICALLY. ANY COPY IS DEEMED UNCONTROLLED AND THEREFORE NOT NECESSARILY THE LATEST REVISION</li> <li>• ALL INFORMATION REMAINS THE PROPERTY OF COMM AIR AUSTRALIA PTY LTD</li> </ul>
CUT SIZE	-	WEIGHT	450 kg	DATE	18/02/2022	ORIGINAL SIZE:		A3	DESCRIPTION:	
MATERIAL	-	SURFACE FINISH	POWDER COATED	SCALE	1:20	SHEET 1 OF 1				
QUANTITY	1			DRAWN BY	EW					
				APPROVED BY	MD					